

POWER AMPLIFIER

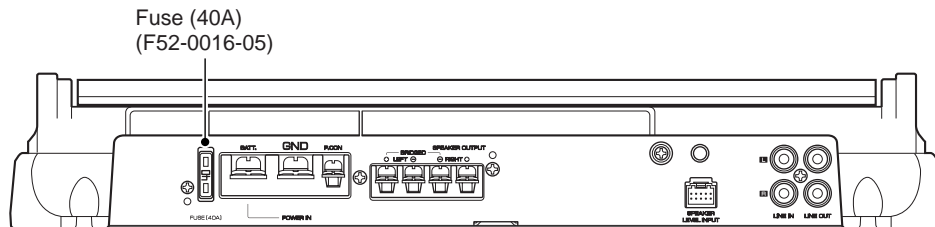
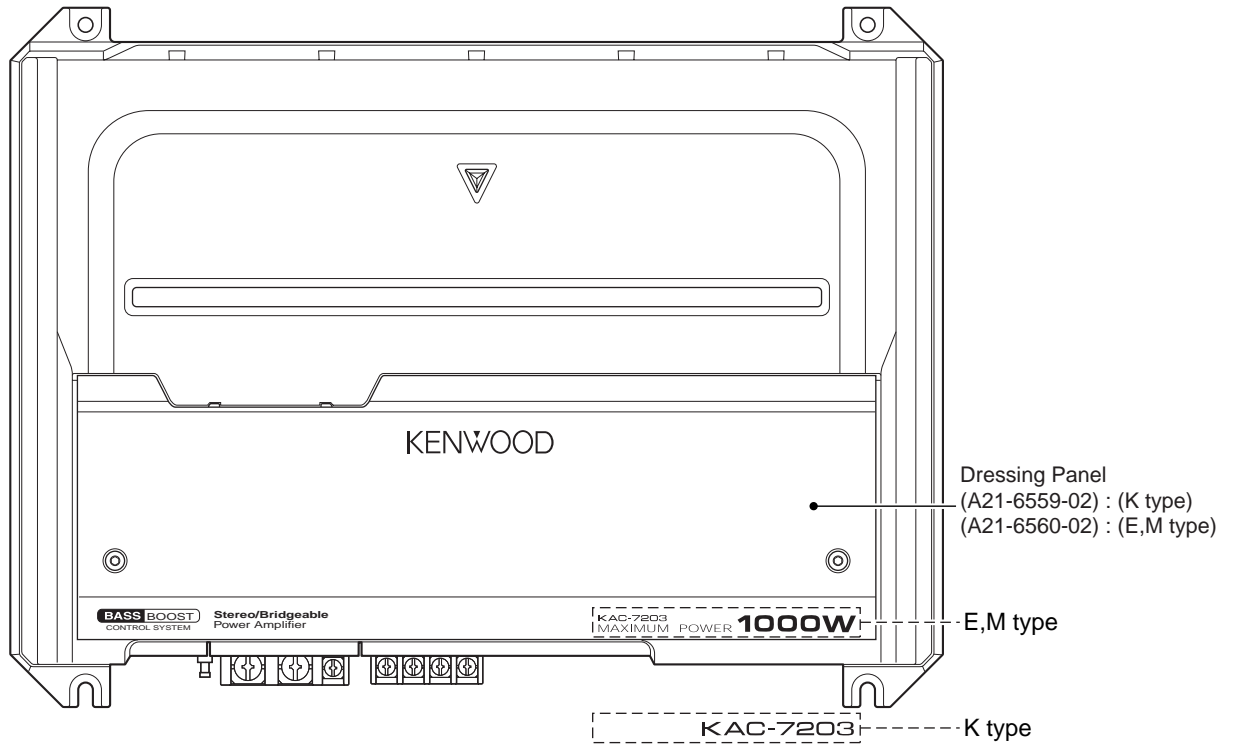
KAC-7203

SERVICE MANUAL

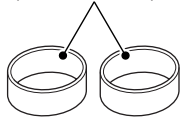
KENWOOD

Kenwood Corporation

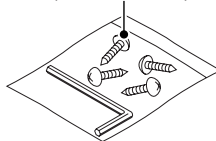
© 2006-11 PRINTED IN JAPAN
B53-0467-00 (N) 957



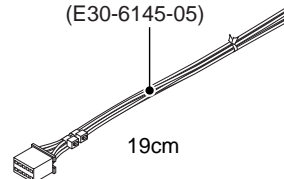
Accessories
(W01-1606-05) x2



Screw set
(N99-1794-05)



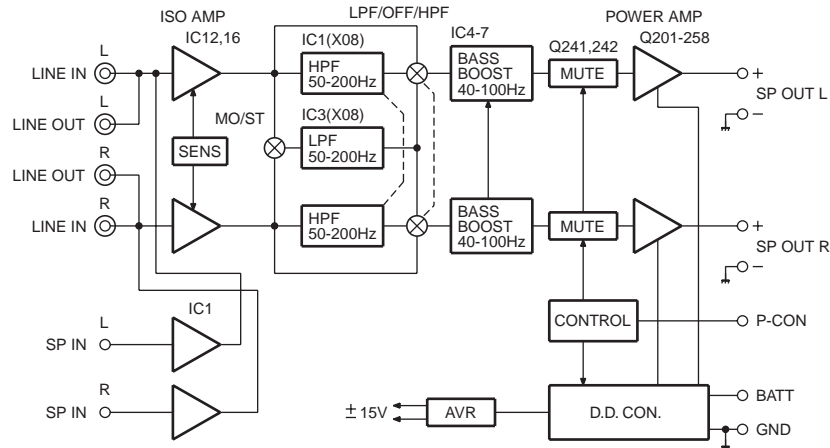
Connecting cord assy
(E30-6145-05)



19cm



BLOCK DIAGRAM



COMPONENTS DESCRIPTION

● PREAMPLIFIER UNIT (X08-4190-12)

Ref. No.	Application / Function
IC1	HPF
IC2	Phase reversal amplifier (Lch only)
IC3	LPF
IC4-6	Bass-boost circuit
IC7	Bass-boost mixing amplifier

● AUDIO UNIT (X09-5830-12)

Ref. No.	Application / Function
IC1,12,16	Input isolation amplifier
IC5	DC/DC converter
IC6	Temperature detection comparator
Q1,2	±15V AVR
Q3-8	DC/DC converter FET
Q9-12	DC/DC converter FET driver
Q13,14	For controlling DC/DC converter FET driver
Q201-204	Power amplifier initial step differential driving
Q205-208	Power amplifier second step differential driving

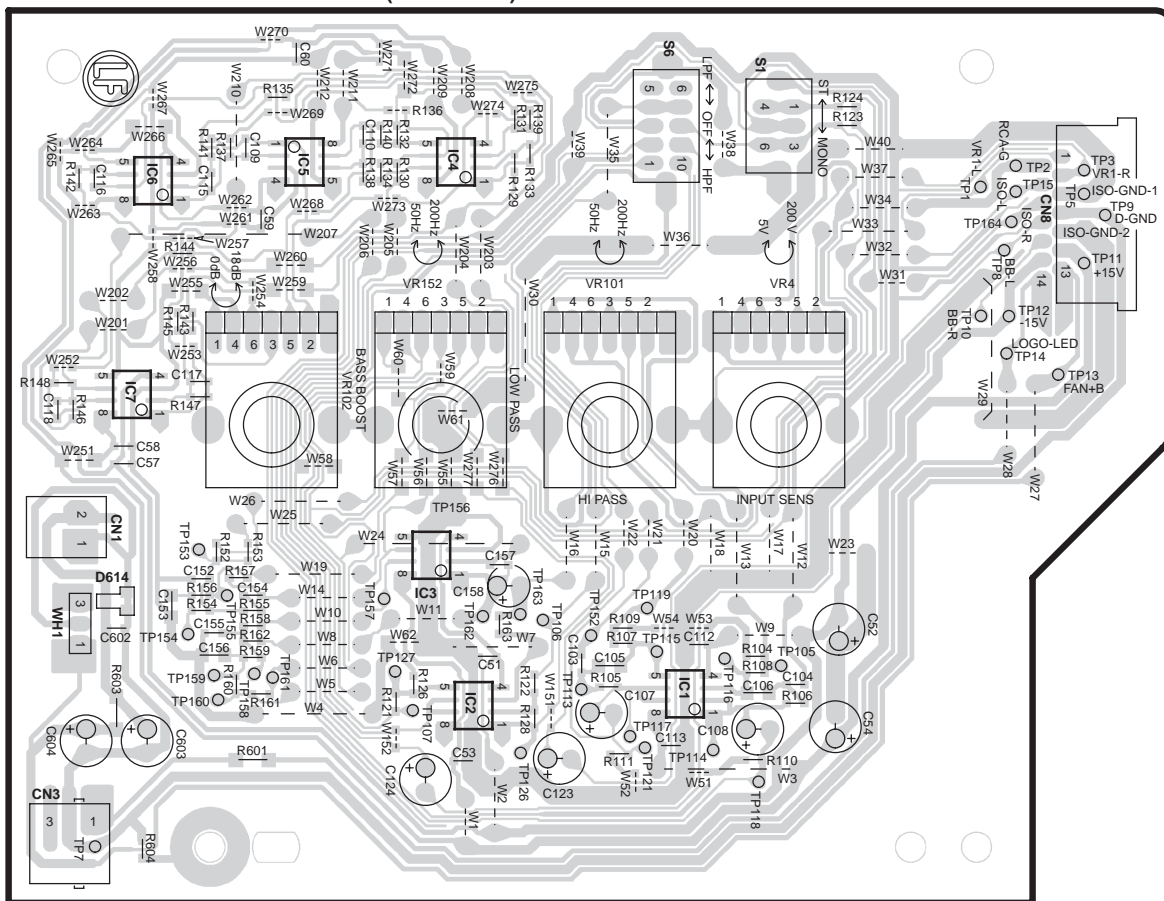
Ref. No.	Application / Function
Q209,210	Current limiter
Q211,213	Temperature detection for idling
Q215-218	Current limiter
Q220,222-227,229	Power amplifier final
Q241,242	Power amplifier mute
Q251-258	Power amplifier driver
Q280,282	Power amplifier ATT (-3dB)
Q601,615-618	Power-ON shock preventer circuit
Q602	P-Con OFF detection
Q603	Mute drive
Q604,605	P-Con control circuit
Q606	Excess voltage detection
Q607,608,619,620	Temperature detection control circuit
Q609	Fan power supply
Q610	Excess current detection
Q611,612	DC detection
Q613,614	DC detection for latch
Q621,622	For LED control
Q623	Temperature detection control circuit

ADJUSTMENT

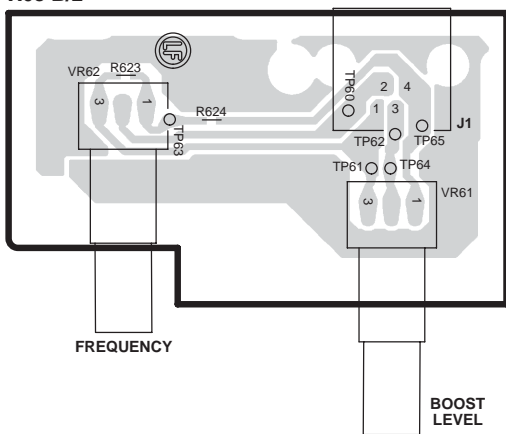
No.	ITEM	ALIGNMENT POINT	METHOD	ALIGN FOR	NOTE
1	IDLE CURRENT	VR1 (Lch) VR2 (Rch)	Connect a DC voltmeter between check land (Refer to PC BOARD)	2.5mV	After Power on 5 minutes

PC BOARD (FOIL SIDE VIEW)

PREAMPLIFIER UNIT X08-4190-12 A/2 (J76-0069-22)



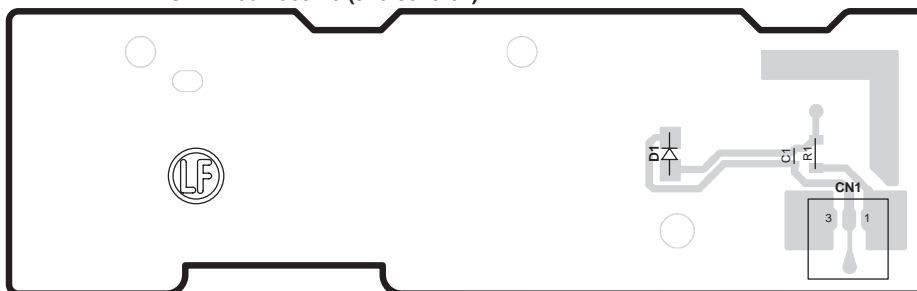
X08 B/2



X08-4190-12

Ref. No.	Address	Ref. No.	Address
IC1	4C	IC5	2B
IC2	4B	IC6	2A
IC3	3B	IC7	3A
IC4	2B		

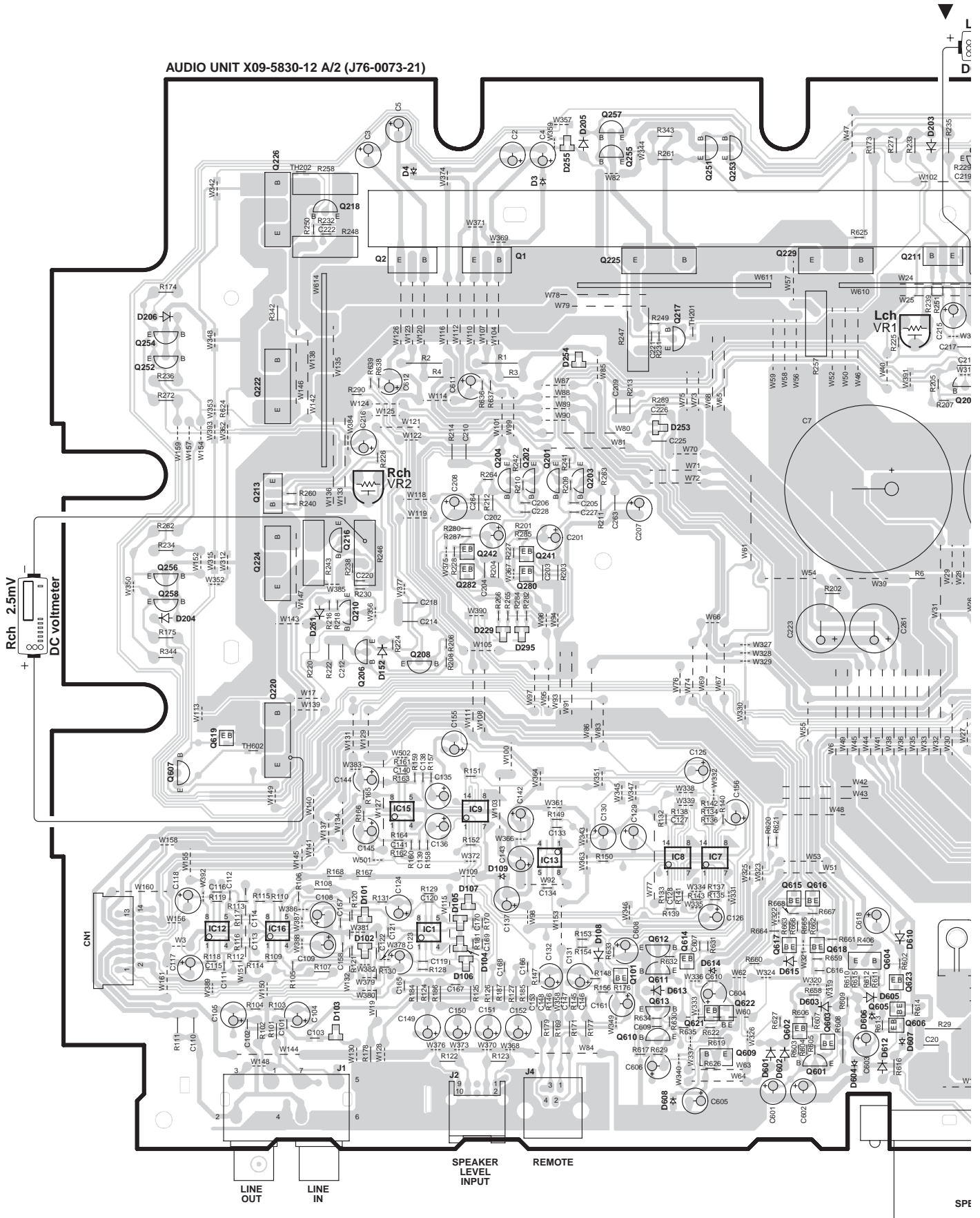
PREAMPLIFIER UNIT X08-4360-10 (J76-0379-02)



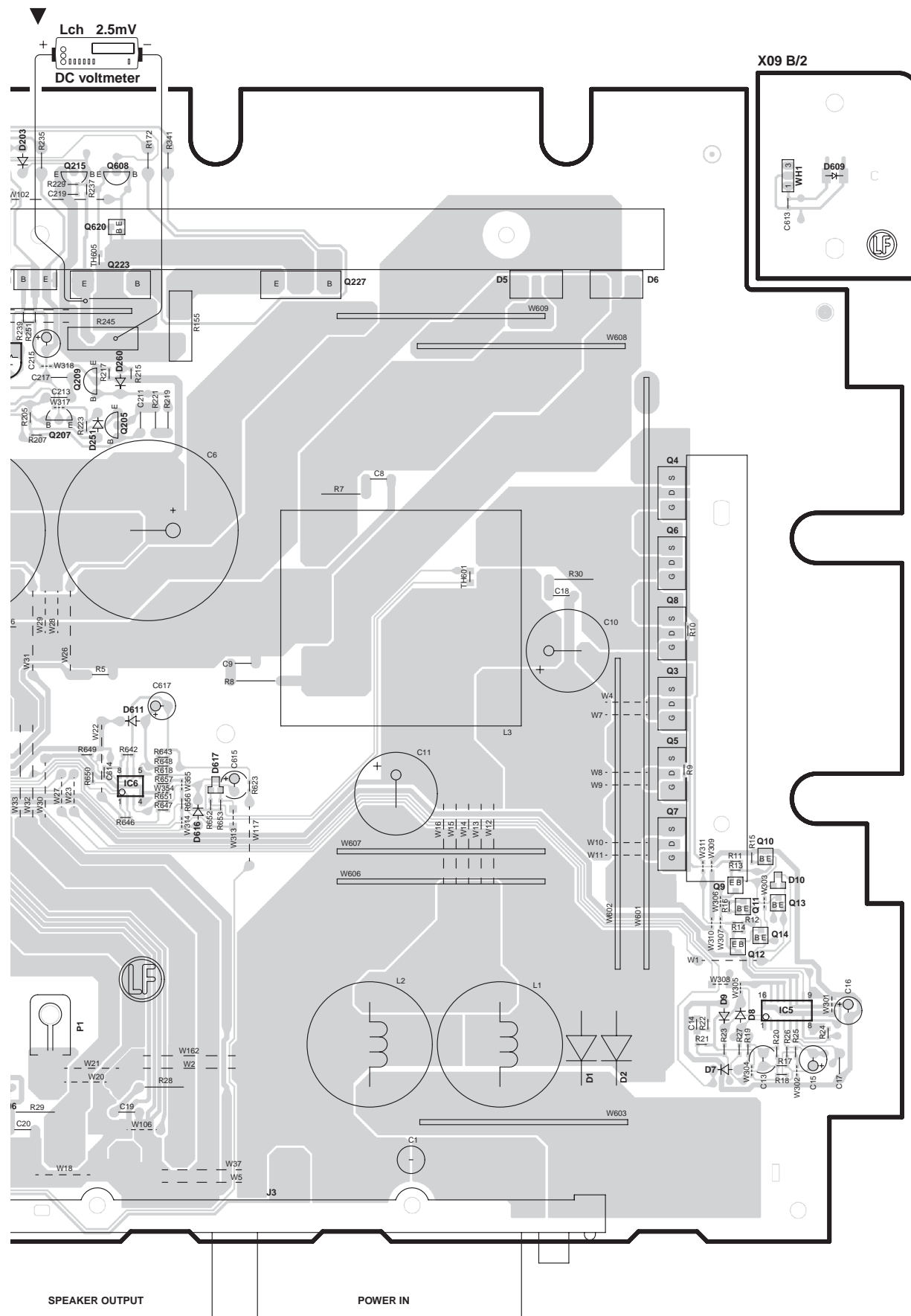
Refer to the schematic diagram for the values of resistors and capacitors.

KAC-7203

PC BOARD (FOIL SIDE VIEW)



Refer to the schematic diagram for the values of resistors and capacitors.

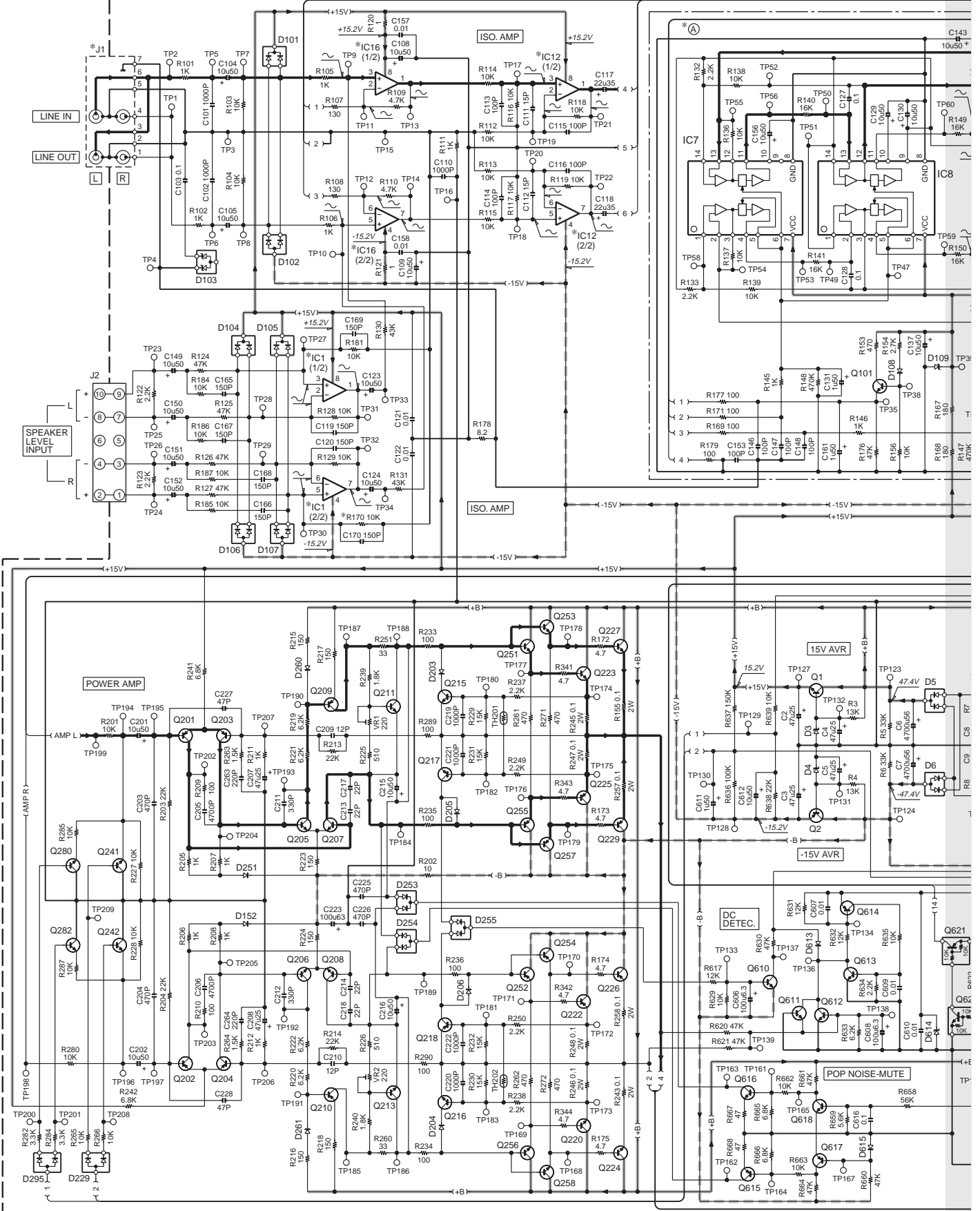


X09-5830-12

Ref. No.	Address
IC1	6H
IC5	6N
IC6	5K
IC12	6G
IC16	6G
Q1	2H
Q2	2H
Q3	4N
Q4	3N
Q5	4N
Q6	3N
Q7	5N
Q8	4N
Q9	5N
Q10	5N
Q11	5N
Q12	5N
Q13	5N
Q14	5N
Q201	3H
Q202	3H
Q203	3I
Q204	3H
Q205	3K
Q206	4G
Q207	3K
Q208	4H
Q209	3K
Q210	4G
Q211	2J
Q213	3G
Q215	2K
Q216	4G
Q217	3I
Q218	2G
Q220	4G
Q222	3G
Q223	2K
Q224	4G
Q225	2I
Q226	2G
Q227	2L
Q229	2J
Q241	4H
Q242	4H
Q251	2I
Q252	3F
Q253	2I
Q254	3F
Q255	2I
Q256	4G
Q257	2I
Q258	4G
Q280	4H
Q282	4H
Q601	6J
Q602	6J
Q603	6J
Q604	6J
Q605	6J
Q606	6J
Q607	5G
Q608	2K
Q609	6I
Q610	6I
Q611	6I
Q612	6I
Q613	6I
Q614	6I
Q615	5J
Q616	5J
Q617	6J
Q618	6J
Q619	5G
Q620	2K
Q621	6I
Q622	6I
Q623	6J

KAC-7203

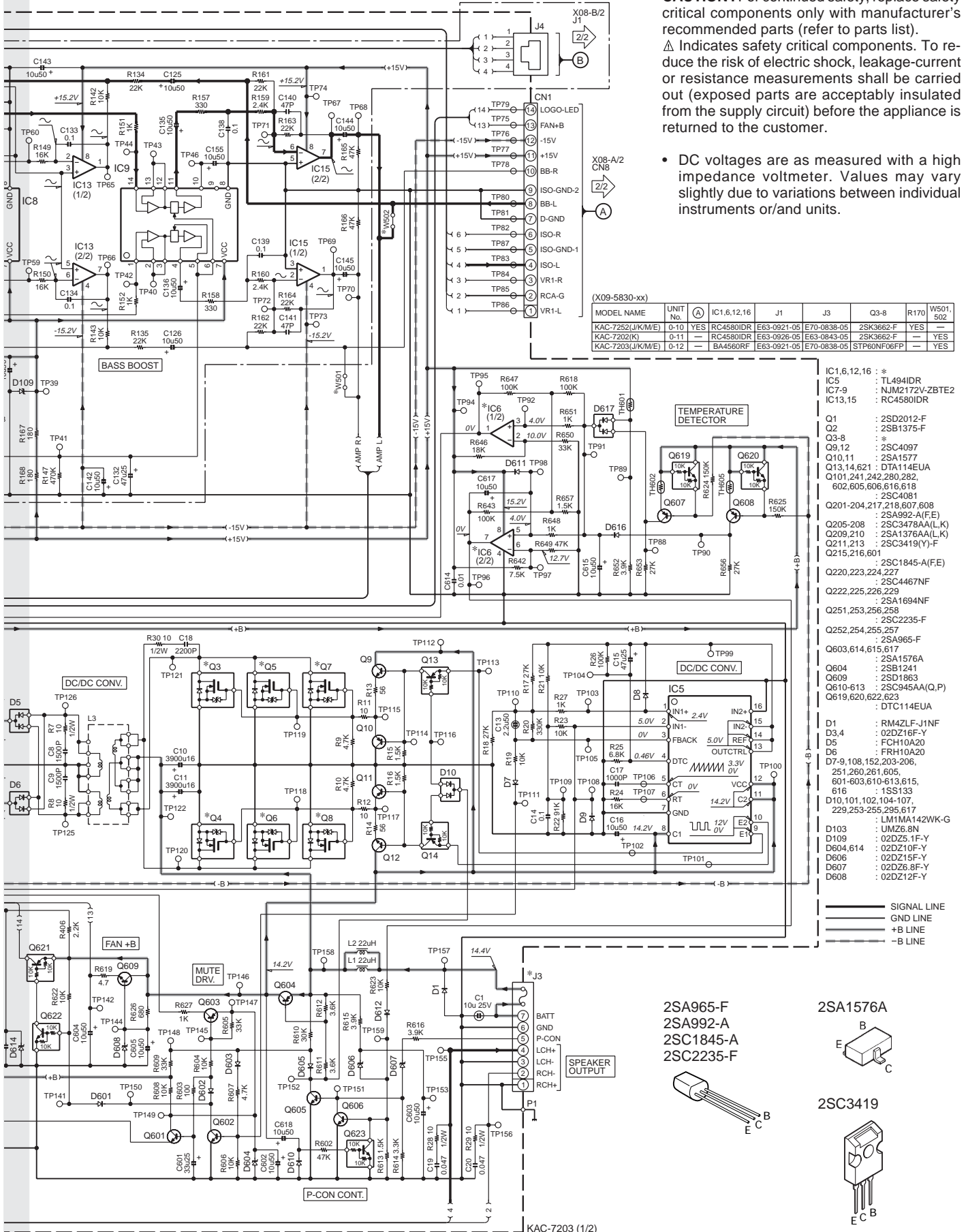
(X09-5830-xx) (A/2)



KAC-7203

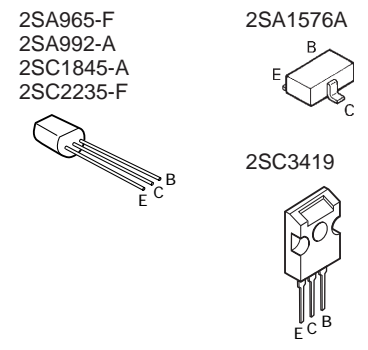
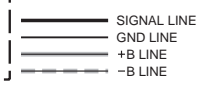
CAUTION : For continued safety, replace safety critical components only with manufacturer's recommended parts (refer to parts list).
 ⚠ Indicates safety critical components. To reduce the risk of electric shock, leakage-current or resistance measurements shall be carried out (exposed parts are acceptably insulated from the supply circuit) before the appliance is returned to the customer.

• DC voltages are as measured with a high impedance voltmeter. Values may vary slightly due to variations between individual instruments or/and units.



MODEL NAME	UNIT No.	IC1,6,12,16	J1	J3	Q3-8	R170	W501, 502
KAC-7252(J/K/M/E)	0-10	YES	RC4580IDR	E63-0921-05	E70-0838-05	2SK3662-F	YES
KAC-7202(K)	0-11	—	RC4580IDR	E63-0926-05	E63-0843-05	2SK3662-F	—
KAC-7203(J/K/M/E)	0-12	—	BA4560RF	E63-0921-05	E70-0838-05	STP60NF06P	YES

- IC1,6,12,16 : *
- IC5 : TL494IDR
- IC7-9 : NJM2172V-ZBTE2
- IC13,15 : RC4580IDR
- Q1 : 2SD2012-F
- Q2-8 : 2SB1375-F
- Q9,12 : 2SC4097
- Q10,11 : 2SA1577
- Q13,14,621 : DTA114EUA
- Q101,241,242,280,282, 602,605,606,616,618 : 2SC4081
- Q201-204,217,218,607,608 : 2SC1845-A(FE)
- Q205-208 : 2SA992-A(FE)
- Q209,210 : 2SA1376A(A,L,K)
- Q211,213 : 2SC3419(Y)-F
- Q215,216,601 : 2SC1845-A(FE)
- Q220,223,224,227 : 2SC4467NF
- Q222,225,226,229 : 2SA1694NF
- Q251,253,256,258 : 2SC2235-F
- Q252,254,255,257 : 2SA965-F
- Q603,614,615,617 : 2SA1576A
- Q604 : 2SB1241
- Q609 : 2SD1863
- Q610-613 : 2SC945AA(Q,P)
- Q619,620,622,623 : DTC114EUA
- D1 : RM42L1-F1NF
- D3,4 : 02DZ16F-Y
- D5 : FCH10A20
- D6 : FRH10A20
- D7-9,108,152,203-206, 251,260,261,605, 601-603,610-613,615, 616 : 1SS133
- D10,101,102,104-107, 229,253-255,295,617 : LM118A142WK-G
- D103 : UMZ6.8N
- D109 : 02DZ5.1F-Y
- D604,614 : 02DZ10F-Y
- D606 : 02DZ15F-Y
- D607 : 02DZ6.8F-Y
- D608 : 02DZ12F-Y



KAC-7203 (1/2)

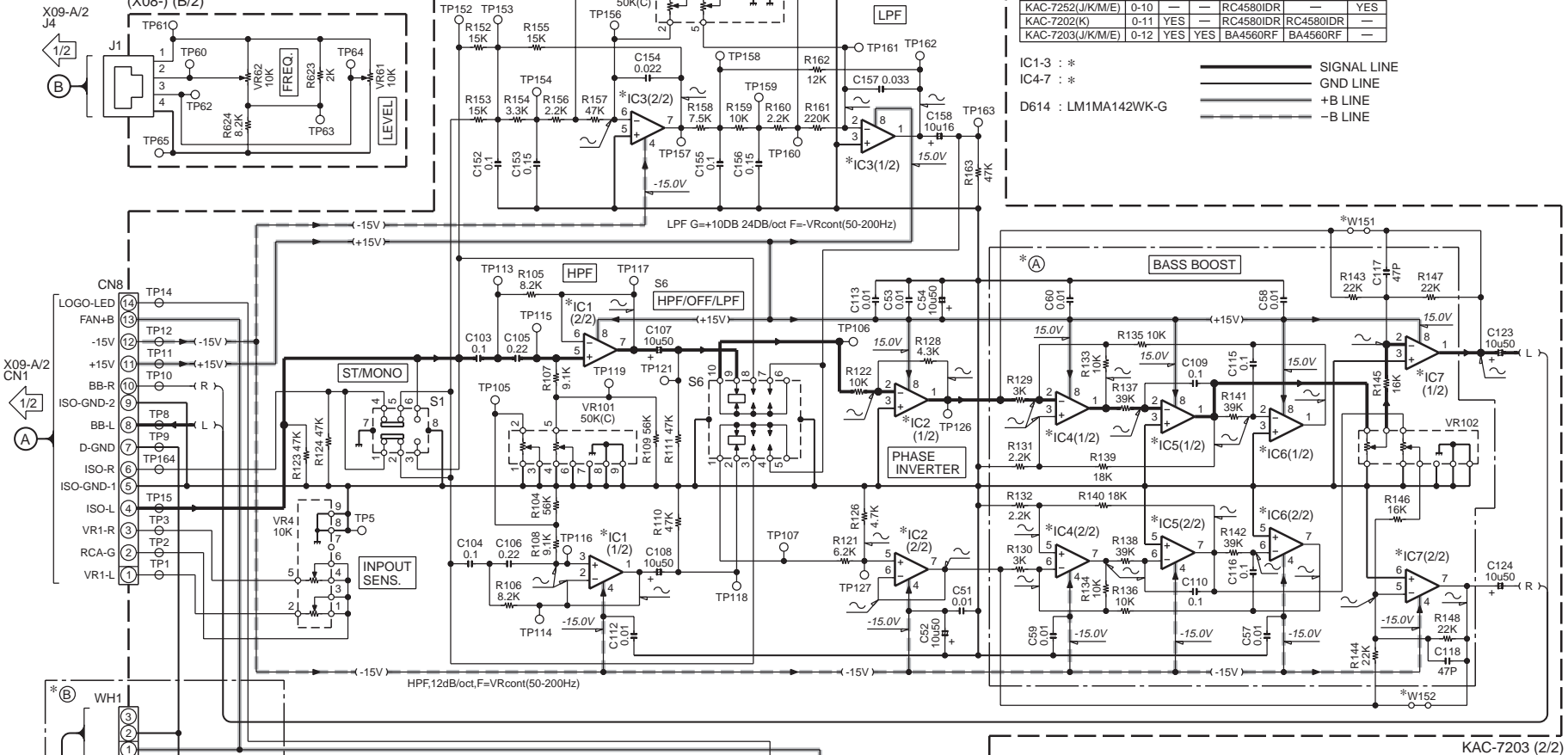
MODEL NAME	UNIT No.	(A)	(B)	IC1-3	IC4.7	W151, 152
KAC-7252(J/K/M/E)	0-10	—	—	RC4580IDR	—	YES
KAC-7202(K)	0-11	YES	—	RC4580IDR	RC4580IDR	—
KAC-7203(J/K/M/E)	0-12	YES	YES	BA4560RF	BA4560RF	—

IC1-3 : *
 IC4-7 : *
 D614 : LM1MA142WK-G

————— SIGNAL LINE
 ————— GND LINE
 ————— +B LINE
 - - - - -B LINE

(X08-4190-xx) (A/2)

KAC-7252 ONLY
 WIRE REMOTE CONTROL UNIT
 (X08-) (B/2)

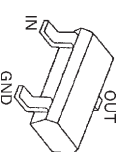
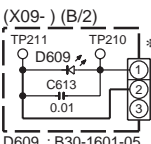
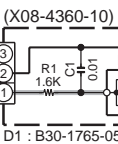


KAC-7203 (2/2)

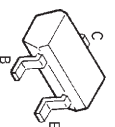
CAUTION : For continued safety, replace safety critical components only with manufacturer's recommended parts (refer to parts list).
 ▲ Indicates safety critical components. To reduce the risk of electric shock, leakage-current or resistance measurements shall be carried out (exposed parts are acceptably insulated from the supply circuit) before the appliance is returned to the customer.

• DC voltages are as measured with a high impedance voltmeter. Values may vary slightly due to variations between individual instruments or/and units.

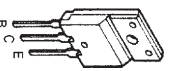
MODEL NAME	UNIT No.	WH1
KAC-7252(J/K/M/E)	0-10	E30-0710-05
KAC-7202(K)	0-11	E30-0710-05
KAC-7203(J/K/M/E)	0-12	E39-0891-05



DTA114EUA
 DTC114EUA

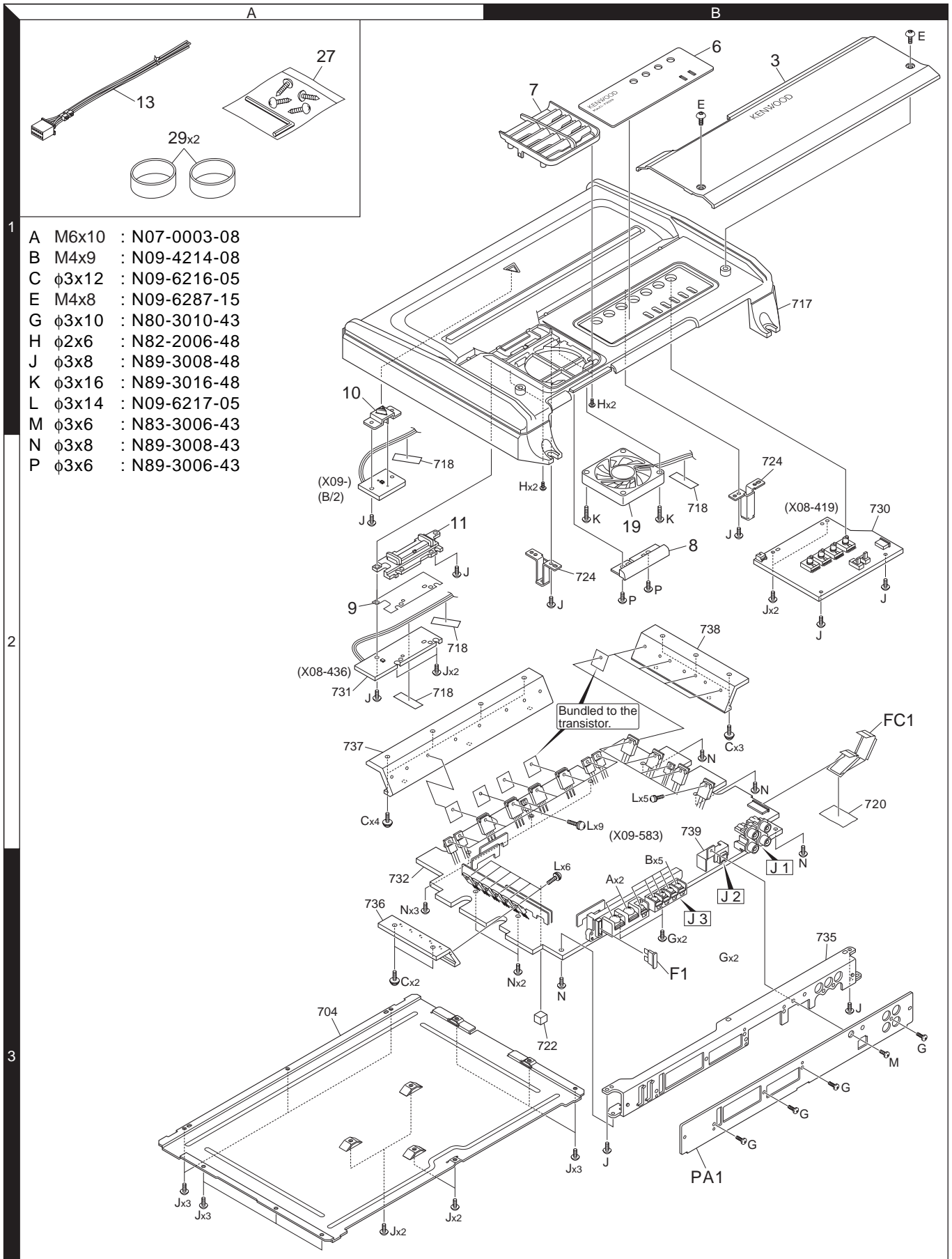


2SC4081



2SB1375-F
 2SD2012-F

EXPLODED VIEW



PARTS LIST

* New parts

Parts without **Parts No.** are not supplied.

Les articles non mentionnés dans le **Parts No.** ne sont pas fournis.

Teile ohne **Parts No.** werden nicht geliefert.

Ref. No.	Added	New	Parts No.	Description	Destination
KAC-7203					
3 3 PA1	1B 1B 3B	* * *	A21-6559-02 A21-6560-02 A64-4077-02	DRESSING PANEL DRESSING PANEL PANEL	K E1M1
6 7	1B 1B	* *	B03-5083-02 B07-3193-02	DRESSING PLATE ESCUTCHEON	
8	2B	*	B07-3194-03	ESCUTCHEON	
9	2A	*	B11-2006-04	REFLECTION SHEET	
10	1A	*	B19-2324-03	LIGHTING BOARD	
11 - - -	2A	* * * *	B19-2419-02 B64-3501-00 B64-3502-00 B64-3503-00	LIGHTING BOARD INSTRUCTION MANUAL(ENG.FRE.SPA INSTRUCTION MA(GER.DUT.ITA.POR INSTRUCTION MA(ENG.T.CHI.S.CHI	KE1 E1 M1
13 FC1	1A 2B		E30-6145-05 E39-0699-15	CONNECTING CORD ASSY FLAT CABLE	
19 F1	2B 3B		F09-1885-15 F52-0016-05	FAN FUZE (BLADE TYPE) 40A	
- - -		* * *	H54-3871-03 H54-3872-03 H54-3873-03	ITEM CARTON CASE ITEM CARTON CASE ITEM CARTON CASE	K E1 M1
27 A B C E	1A 3B 3B 2A 1B	* *	N99-1794-05 N07-0003-08 N09-4214-08 N09-6216-05 N09-6287-15	SCREW & WRENCH KEY SET SCREW (M6X10) SCREW (M4X9) TAPTITE SCREW (3X12) DRESSED SCREW (M4X8)	
G H J K P	3B 1B 3A 2B 2B		N80-3010-43 N82-2006-48 N89-3008-48 N89-3016-48 N89-3006-43	PAN HEAD TAPTITE SCREW BINDING HEAD TAPTITE SCREW BINDING HEAD TAPTITE SCREW BINDING HEAD TAPTITE SCREW BINDING HEAD TAPTITE SCREW	
29	1A		W01-1606-05	ACCESSORIES	
PREAMPLIFIER UNIT (X08-4190-12)					
C51 C52 C53 C54 C57-60			CK73GB1H103K CD04BJ1H100M CK73GB1H103K CD04BJ1H100M CK73GB1H103K	CHIP C 0.010UF K ELECTRO 10UF 50WV CHIP C 0.010UF K ELECTRO 10UF 50WV CHIP C 0.010UF K	
C103,104 C105,106 C107,108 C109,110 C112,113			CK73GB1H104K CK73FB1H224K CD04BJ1H100M CK73GB1H104K CK73GB1H103K	CHIP C 0.10UF K CHIP C 0.22UF K ELECTRO 10UF 50WV CHIP C 0.10UF K CHIP C 0.010UF K	
C115,116 C117,118 C123,124 C152 C153			CK73GB1H104K CC73GC1H470J CD04BJ1H100M CK73GB1H104K CK73FB1E154K	CHIP C 0.10UF K CHIP C 47PF J ELECTRO 10UF 50WV CHIP C 0.10UF K CHIP C 0.15UF K	
C154 C155 C156 C157 C158			CK73GB1H223K CK73GB1H104K CK73FB1E154K CK73GB1H333K CD04AS1V100M	CHIP C 0.022UF K CHIP C 0.10UF K CHIP C 0.15UF K CHIP C 0.033UF K ELECTRO 10UF 35WV	

Ref. No.	Added	New	Parts No.	Description	Destination
C602 C603 C604			CK73GB1H103K CD04BJ1E470M CD04BJ1H100M	CHIP C 0.010UF K ELECTRO 47UF 25WV ELECTRO 10UF 50WV	
CN1 CN3 CN8 WH1		*	E41-1699-05 E41-1700-05 E41-2277-05 E39-0710-05	PIN ASSY PIN ASSY FLAT CABLE CONNECTOR WIRING HARNESS	
R104 R105,106 R107,108 R109 R110,111			RK73GB2A563J RK73GB2A822J RK73GB2A912J RK73GB2A563J RK73GB2A473J	CHIP R 56K J 1/10W CHIP R 8.2K J 1/10W CHIP R 9.1K J 1/10W CHIP R 56K J 1/10W CHIP R 47K J 1/10W	
R121 R122 R123,124 R126 R128			RK73GB2A622J RK73GB2A103J RK73GB2A473J RK73GB2A472J RK73GB2A432J	CHIP R 6.2K J 1/10W CHIP R 10K J 1/10W CHIP R 47K J 1/10W CHIP R 4.7K J 1/10W CHIP R 4.3K J 1/10W	
R129,130 R131,132 R133-136 R137,138 R139,140			RK73GB2A302J RK73GB2A222J RK73GB2A103J RK73GB2A393J RK73GB2A183J	CHIP R 3.0K J 1/10W CHIP R 2.2K J 1/10W CHIP R 10K J 1/10W CHIP R 39K J 1/10W CHIP R 18K J 1/10W	
R141,142 R143,144 R145,146 R147,148 R152,153			RK73GB2A393J RK73GB2A223J RK73GB2A163J RK73GB2A223J RK73GB2A153J	CHIP R 39K J 1/10W CHIP R 22K J 1/10W CHIP R 16K J 1/10W CHIP R 22K J 1/10W CHIP R 15K J 1/10W	
R154 R155 R156 R157 R158			RK73GB2A332J RK73GB2A153J RK73GB2A222J RK73GB2A473J RK73GB2A752J	CHIP R 3.3K J 1/10W CHIP R 15K J 1/10W CHIP R 2.2K J 1/10W CHIP R 47K J 1/10W CHIP R 7.5K J 1/10W	
R159 R160 R161 R162 R163			RK73GB2A103J RK73GB2A222J RK73GB2A224J RK73GB2A123J RK73GB2A473J	CHIP R 10K J 1/10W CHIP R 2.2K J 1/10W CHIP R 220K J 1/10W CHIP R 12K J 1/10W CHIP R 47K J 1/10W	
R601 R603 R604 VR4 VR101			RK73EB2E821J RK73EB2E100J RK73GB2A100J R31-0246-05 R31-0241-05	CHIP R 820 J 1/4W CHIP R 10 J 1/4W CHIP R 10 J 1/10W VARIABLE RESISTOR (10K) VARIABLE RESISTOR (50Kx2)	
VR102 VR152 W51-54 W55-58 W59			R31-0244-05 R31-0241-05 R92-1252-05 RK73EB2E000J R92-1252-05	VARIABLE RESISTOR (10Kx2) VARIABLE RESISTOR (50Kx2) CHIP R 0 OHM J 1/16W CHIP R 0.0 J 1/4W CHIP R 0 OHM J 1/16W	
W60-62 W251 W252-254 W255 W256-258			RK73EB2E000J RK73EB2E000J R92-1252-05 RK73EB2E000J R92-1252-05	CHIP R 0.0 J 1/4W CHIP R 0.0 J 1/4W CHIP R 0 OHM J 1/16W CHIP R 0.0 J 1/4W CHIP R 0 OHM J 1/16W	
W259,260 W261-265			RK73EB2E000J R92-1252-05	CHIP R 0.0 J 1/4W CHIP R 0 OHM J 1/16W	

E1 : KAC-7203 (Europe) K : KAC-7203 (North America) M1 : KAC-7203 (Other Areas)

△ Indicates safety critical components.

PARTS LIST

PREAMPLIFIER UNIT (X08-4190-12)

Ref. No.	Add	New	Parts No.	Description	Destination
W266			RK73EB2E000J	CHIP R 0.0 J 1/4W	
W267-271			R92-1252-05	CHIP R 0 OHM J 1/16W	
W272			RK73EB2E000J	CHIP R 0.0 J 1/4W	
W273-275			R92-1252-05	CHIP R 0 OHM J 1/16W	
W276,277			RK73EB2E000J	CHIP R 0.0 J 1/4W	
S1			S62-0873-05	SLIDE SWITCH	
S6			S62-0874-05	SLIDE SWITCH	
D614			LM1MA142WK-G	DIODE	
IC1-7			BA4560RF	ANALOGUE IC	
PREAMPLIFIER UNIT (X08-4360-10)					
D1		*	B30-1765-05	LED (BLUE,SEDE LIGHT)	
C1			CK73GB1H103K	CHIP C 0.010UF K	
CN1		*	E41-1700-05	PIN ASSY	
R1		*	RK73EB2E162J	CHIP R 1.6K J 1/4W	
AUDIO UNIT (X09-5830-12)					
D609			B30-1743-05	LED (RED LED)	
C1			C90-5557-05	ELECTRO 10UF 25WV	
C2-5			CD04BJ1E470M	ELECTRO 47UF 25WV	
C6,7			C90-5690-05	ELECTRO 4700UF 56WV	
C8,9			CQ92FM1H152J	MYLAR 1500PF J	
C10,11			CD04BC1C392M	ELECTRO 3900UF 16WV	
C13			C90-5563-05	ELECTRO 2.2UF 50WV	
C14			CK73FB1H104K	CHIP C 0.10UF K	
C15			CD04BJ1E470M	ELECTRO 47UF 25WV	
C16			CD04BJ1H100M	ELECTRO 10UF 50WV	
C17			CQ92FM1H102J	MYLAR 1000PF J	
C18			CQ92FM1H222J	MYLAR 2200PF J	
C19,20			CQ92FM1H473J	MYLAR 0.047UF J	
C101,102			CK73GB1H102K	CHIP C 1000PF K	
C103			CK73FB1H104K	CHIP C 0.10UF K	
C104,105			CD04BJ1H100M	ELECTRO 10UF 50WV	
C108,109			CD04BJ1H100M	ELECTRO 10UF 50WV	
C110			CQ92FM1H102J	MYLAR 1000PF J	
C111,112			CC73GCH1H150J	CHIP C 15PF J	
C113-116			CC73GCH1H101J	CHIP C 100PF J	
C117,118			CD04BJ1H220M	ELECTRO 22UF 50WV	
C119,120			CC73GCH1H151J	CHIP C 150PF J	
C121,122			CK73GB1H103K	CHIP C 0.010UF K	
C123,124			CD04BJ1H100M	ELECTRO 10UF 50WV	
C149-152			CD04BJ1H100M	ELECTRO 10UF 50WV	
C157,158			CK73GB1H103K	CHIP C 0.010UF K	
C165-170			CC73GCH1H151J	CHIP C 150PF J	
C201,202			CD04BJ1H100M	ELECTRO 10UF 50WV	
C203,204			CC45FSL1H471J	CERAMIC 470PF J	
C205,206			CK73GB1H472K	CHIP C 4700PF K	
C207,208			CD04BJ1E470M	ELECTRO 47UF 25WV	
C209,210			CC45FSL1H120J	CERAMIC 12PF J	
C211,212			CC45FSL1H331J	CERAMIC 330PF J	
C213,214			CC45FSL1H220J	CERAMIC 22PF J	
C215,216			CD04BJ1H100M	ELECTRO 10UF 50WV	
C217,218			CC45FSL1H220J	CERAMIC 22PF J	

Ref. No.	Add	New	Parts No.	Description	Destination
C219-222			CK73GB1H102K	CHIP C 1000PF K	
C223			CD04BJ1J101M	ELECTRO 100UF 63WV	
C225,226			CC45FSL1H471J	CERAMIC 470PF J	
C227,228			CC73GCH1H470J	CHIP C 47PF J	
C263,264			CC45FSL1H221J	CERAMIC 220PF J	
C601			CD04BJ1V330M	ELECTRO 33UF 35WV	
C602-605			CD04BJ1H100M	ELECTRO 10UF 50WV	
C606			CD04BJ1A101M	ELECTRO 100UF 10WV	
C607			CK73GB1H103K	CHIP C 0.010UF K	
C608			CD04BJ1A101M	ELECTRO 100UF 10WV	
C609,610			CK73GB1H103K	CHIP C 0.010UF K	
C611			CD04BJ1H010M	ELECTRO 1.0UF 50WV	
C612			CD04BJ1H100M	ELECTRO 10UF 50WV	
C613,614			CK73GB1H103K	CHIP C 0.010UF K	
C615			CD04BJ1H100M	ELECTRO 10UF 50WV	
C616			CK73FB1H104K	CHIP C 0.10UF K	
C617,618			CD04BJ1H100M	ELECTRO 10UF 50WV	
CN1			E41-2277-05	FLAT CABLE CONNECTOR	
J1			E63-0921-05	PIN JACK	
J2			E58-1031-05	RECTANGULAR RECEPTACLE	
J3			E70-0838-05	SCREW TERMINAL BOARD	
WH1		*	E39-0891-05	WIRING HARNESS	
L1,2			L33-2413-05	CHOKE COIL	
L3			L19-0771-05	TRANSFORMER FOR CONVERTER	
G	3B		N80-3010-43	PAN HEAD TAPTITE SCREW	
L	2B		N09-6217-05	TAPTITE SCREW (3X14)	
M	3B		N83-3006-43	PAN HEAD TAPTITE SCREW	
N	3A		N89-3008-43	BINDING HEAD TAPTITE SCREW	
R3,4			RD14BB2C133J	RD 13K J 1/6W	
R5,6			RD14BB2C333J	RD 33K J 1/6W	
R7,8			RD14DB2H100J	SMALL-RD 10 J 1/2W	
R9,10			RK73GB2A472J	CHIP R 4.7K J 1/10W	
R11,12			RK73GB2A100J	CHIP R 10 J 1/10W	
R13,14			RK73GB2A560J	CHIP R 56 J 1/10W	
R15,16			RK73GB2A152J	CHIP R 1.5K J 1/10W	
R17,18			RK73GB2A273J	CHIP R 27K J 1/10W	
R19			RK73GB2A103J	CHIP R 10K J 1/10W	
R20			RK73GB2A334J	CHIP R 330K J 1/10W	
R21			RK73GB2A103J	CHIP R 10K J 1/10W	
R22			RK73GB2A913J	CHIP R 91K J 1/10W	
R23			RK73GB2A103J	CHIP R 10K J 1/10W	
R24			RK73GB2A163J	CHIP R 16K J 1/10W	
R25			RK73GB2A682J	CHIP R 6.8K J 1/10W	
R26			RK73GB2A104J	CHIP R 100K J 1/10W	
R27			RK73GB2A102J	CHIP R 1.0K J 1/10W	
R28-30			RD14DB2H100J	SMALL-RD 10 J 1/2W	
R101,102			RD14BB2C102J	RD 1.0K J 1/6W	
R103,104			RK73GB2A103J	CHIP R 10K J 1/10W	
R105,106			RK73GB2A102J	CHIP R 1.0K J 1/10W	
R107,108			RD14BB2C131J	RD 130 J 1/6W	
R109,110			RK73GB2A472J	CHIP R 4.7K J 1/10W	
R111			RD14BB2C102J	RD 1.0K J 1/6W	
R112-119			RN73GH1J103D	CHIP R 10K D 1/16W	

E1 : KAC-7203 (Europe) K : KAC-7203 (North America) M1 : KAC-7203 (Other Areas)

△ Indicates safety critical components.

PARTS LIST

AUDIO UNIT (X09-5830-12)

Ref. No.	A d	N e w	Parts No.	Description	Desti- nation	Ref. No.	A d	N e w	Parts No.	Description	Desti- nation
R120,121			RK73GB2A1R0J	CHIP R 1.0 J 1/10W		R611,612			RK73GB2A362J	CHIP R 3.6K J 1/10W	
R122,123			RD14BB2C222J	RD 2.2K J 1/6W		R613			RK73GB2A152J	CHIP R 1.5K J 1/10W	
R124-127			RD14BB2C473J	RD 47K J 1/6W		R614			RK73GB2A332J	CHIP R 3.3K J 1/10W	
R128,129			RK73GB2A103J	CHIP R 10K J 1/10W		R615			RK73GB2A392J	CHIP R 3.9K J 1/10W	
R130,131			RK73GB2A433J	CHIP R 43K J 1/10W		R616			RD14BB2C392J	RD 3.9K J 1/6W	
R155			R92-0205-05	METAL-PLATE 0.1 K 2W		R617			RK73GB2A123J	CHIP R 12K J 1/10W	
R170			RK73GB2A103J	CHIP R 10K J 1/10W		R618			RK73GB2A104J	CHIP R 100K J 1/10W	
R172-175			RD14NB2E4R7J	RD 4.7 J 1/4W		R619			RD14BB2C4R7J	RD 4.7 J 1/6W	
R178			RD14BB2C8R2J	RD 8.2 J 1/6W		R620,621			RK73GB2A473J	CHIP R 47K J 1/10W	
R181			RK73GB2A103J	CHIP R 10K J 1/10W		R622,623			RK73GB2A103J	CHIP R 10K J 1/10W	
R184-187			RD14BB2C103J	RD 10K J 1/6W		R624,625			RK73GB2A154J	CHIP R 150K J 1/10W	
R201			RK73GB2A103J	CHIP R 10K J 1/10W		R626			RK73GB2A681J	CHIP R 680 J 1/10W	
R202			RD14NB2E100J	RD 10 J 1/4W		R627			RK73GB2A102J	CHIP R 1.0K J 1/10W	
R203,204			RD14BB2C223J	RD 22K J 1/6W		R629			RK73GB2A103J	CHIP R 10K J 1/10W	
R205-208			RK73GB2A102J	CHIP R 1.0K J 1/10W		R630			RK73GB2A473J	CHIP R 47K J 1/10W	
R209,210			RK73GB2A101J	CHIP R 100 J 1/10W		R631,632			RK73GB2A123J	CHIP R 12K J 1/10W	
R211,212			RD14BB2C102J	RD 1.0K J 1/6W		R633			RK73GB2A622J	CHIP R 6.2K J 1/10W	
R213,214			RD14BB2C223J	RD 22K J 1/6W		R634			RK73GB2A222J	CHIP R 2.2K J 1/10W	
R215-218			RK73GB2A151J	CHIP R 150 J 1/10W		R635			RK73GB2A103J	CHIP R 10K J 1/10W	
R219-222			RD14BB2C622J	RD 6.2K J 1/6W		R636			RK73GB2A104J	CHIP R 100K J 1/10W	
R223,224			RK73GB2A151J	CHIP R 150 J 1/10W		R637			RK73GB2A154J	CHIP R 150K J 1/10W	
R225,226			RK73GB2A511J	CHIP R 510 J 1/10W		R638			RK73GB2A223J	CHIP R 22K J 1/10W	
R227,228			RK73GB2A103J	CHIP R 10K J 1/10W		R639			RK73GB2A103J	CHIP R 10K J 1/10W	
R229-232			RK73GB2A153J	CHIP R 15K J 1/10W		R642			RK73GB2A752J	CHIP R 7.5K J 1/10W	
R233-236			RD14NB2E101J	RD 100 J 1/4W		R643			RK73GB2A104J	CHIP R 100K J 1/10W	
R237,238			RK73GB2A222J	CHIP R 2.2K J 1/10W		R646			RK73GB2A183J	CHIP R 18K J 1/10W	
R239,240			RK73GB2A182J	CHIP R 1.8K J 1/10W		R647			RK73GB2A104J	CHIP R 100K J 1/10W	
R241,242			RK73GB2A682J	CHIP R 6.8K J 1/10W		R648			RK73GB2A102J	CHIP R 1.0K J 1/10W	
R243			R92-0205-05	METAL-PLATE 0.1 K 2W		R649			RK73GB2A473J	CHIP R 47K J 1/10W	
R245-248			R92-0205-05	METAL-PLATE 0.1 K 2W		R650			RK73GB2A333J	CHIP R 33K J 1/10W	
R249,250			RK73GB2A222J	CHIP R 2.2K J 1/10W		R651			RK73GB2A102J	CHIP R 1.0K J 1/10W	
R251			RK73GB2A330J	CHIP R 33 J 1/10W		R652			RK73GB2A392J	CHIP R 3.9K J 1/10W	
R257,258			R92-0205-05	METAL-PLATE 0.1 K 2W		R653			RK73GB2A273J	CHIP R 27K J 1/10W	
R260			RK73GB2A330J	CHIP R 33 J 1/10W		R656			RK73GB2A273J	CHIP R 27K J 1/10W	
R261,262			RD14NB2E471J	RD 470 J 1/4W		R657			RK73GB2A152J	CHIP R 1.5K J 1/10W	
R263,264			RK73GB2A152J	CHIP R 1.5K J 1/10W		R658			RK73GB2A563J	CHIP R 56K J 1/10W	
R265,266			RK73GB2A103J	CHIP R 10K J 1/10W		R659			RK73GB2A562J	CHIP R 5.6K J 1/10W	
R271,272			RD14NB2E471J	RD 470 J 1/4W		R660,661			RK73GB2A473J	CHIP R 47K J 1/10W	
R280			RK73GB2A103J	CHIP R 10K J 1/10W		R662,663			RK73GB2A103J	CHIP R 10K J 1/10W	
R282			RK73GB2A332J	CHIP R 3.3K J 1/10W		R664			RK73GB2A473J	CHIP R 47K J 1/10W	
R284			RK73GB2A332J	CHIP R 3.3K J 1/10W		R665,666			RK73GB2A682J	CHIP R 6.8K J 1/10W	
R285			RK73GB2A103J	CHIP R 10K J 1/10W		R667,668			RK73GB2A470J	CHIP R 47 J 1/10W	
R287			RK73GB2A103J	CHIP R 10K J 1/10W		VR1,2			R32-0294-05	SEMI FIXED VARIABLE RESISTOR	
R289,290			RK73GB2A101J	CHIP R 100 J 1/10W		W301			RK73EB2E000J	CHIP R 0.0 J 1/4W	
R341-344			RD14NB2E4R7J	RD 4.7 J 1/4W		W302-307			R92-1252-05	CHIP R 0 OHM J 1/16W	
R406			RD14BB2C222J	RD 2.2K J 1/6W		W308			RK73EB2E000J	CHIP R 0.0 J 1/4W	
R602			RK73GB2A473J	CHIP R 47K J 1/10W		W309-311			R92-1252-05	CHIP R 0 OHM J 1/16W	
R603			RK73GB2A101J	CHIP R 100 J 1/10W		W312,313			RK73EB2E000J	CHIP R 0.0 J 1/4W	
R604			RK73GB2A103J	CHIP R 10K J 1/10W		W314			R92-1252-05	CHIP R 0 OHM J 1/16W	
R605			RK73GB2A333J	CHIP R 33K J 1/10W		W315			RK73EB2E000J	CHIP R 0.0 J 1/4W	
R606			RK73GB2A103J	CHIP R 10K J 1/10W		W317-322			R92-1252-05	CHIP R 0 OHM J 1/16W	
R607			RK73GB2A472J	CHIP R 4.7K J 1/10W		W323			RK73EB2E000J	CHIP R 0.0 J 1/4W	
R608		*	R92-5122-05	CARBON FILM R 10K J 1/4W		W324			R92-1252-05	CHIP R 0 OHM J 1/16W	
R609			RK73GB2A333J	CHIP R 33K J 1/10W		W325			RK73EB2E000J	CHIP R 0.0 J 1/4W	
R610			RK73GB2A303J	CHIP R 30K J 1/10W		W326-329			R92-1252-05	CHIP R 0 OHM J 1/16W	

E1 : KAC-7203 (Europe) K : KAC-7203 (North America) M1 : KAC-7203 (Other Areas)

△ Indicates safety critical components.

PARTS LIST

AUDIO UNIT (X09-5830-12)

Ref. No.	Add	New	Parts No.	Description	Destination	Ref. No.	Add	New	Parts No.	Description	Destination
W330			RK73EB2E000J	CHIP R 0.0 J 1/4W		D614			02DZ10F-Y	ZENER DIODE	
W333			R92-1252-05	CHIP R 0 OHM J 1/16W		D615,616			1SS133	DIODE	
W336,337			R92-1252-05	CHIP R 0 OHM J 1/16W		D617			LM1MA142WK-G	DIODE	
W340			R92-1252-05	CHIP R 0 OHM J 1/16W		IC1			BA4560RF	ANALOGUE IC	
W342			RK73EB2E000J	CHIP R 0.0 J 1/4W		IC5			TL494IDR	ANALOGUE IC	
W344			R92-1252-05	CHIP R 0 OHM J 1/16W		IC6			BA4560RF	ANALOGUE IC	
W348			RK73EB2E000J	CHIP R 0.0 J 1/4W		IC12			BA4560RF	ANALOGUE IC	
W350			R92-1252-05	CHIP R 0 OHM J 1/16W		IC16			BA4560RF	ANALOGUE IC	
W352-356			R92-1252-05	CHIP R 0 OHM J 1/16W		Q1			2SD2012-F	TRANSISTOR	
W357			RK73EB2E000J	CHIP R 0.0 J 1/4W		Q2			2SB1375-F	TRANSISTOR	
W359			R92-1252-05	CHIP R 0 OHM J 1/16W		Q3-8			STP60NF06FP	FET	
W362			RK73EB2E000J	CHIP R 0.0 J 1/4W		Q9			2SC4097	TRANSISTOR	
W367,368			R92-1252-05	CHIP R 0 OHM J 1/16W		Q10,11			2SA1577	TRANSISTOR	
W369			RK73EB2E000J	CHIP R 0.0 J 1/4W		Q12			2SC4097	TRANSISTOR	
W370			R92-1252-05	CHIP R 0 OHM J 1/16W		Q13,14			DTA114EUA	DIGITAL TRANSISTOR	
W371			RK73EB2E000J	CHIP R 0.0 J 1/4W		Q201-204			2SA992-A(F,E)	TRANSISTOR	
W373			R92-1252-05	CHIP R 0 OHM J 1/16W		Q205-208			2SC3478AA(L,K)	TRANSISTOR	
W374			RK73EB2E000J	CHIP R 0.0 J 1/4W		Q209,210			2SA1376AA(L,K)	TRANSISTOR	
W375-378			R92-1252-05	CHIP R 0 OHM J 1/16W		Q211			2SC3419(Y)-F	TRANSISTOR	
W379-381			RK73EB2E000J	CHIP R 0.0 J 1/4W		Q213			2SC3419(Y)-F	TRANSISTOR	
W382			R92-1252-05	CHIP R 0 OHM J 1/16W		Q215,216			2SC1845-A(F,E)	TRANSISTOR	
W384,385			RK73EB2E000J	CHIP R 0.0 J 1/4W		Q217,218			2SA992-A(F,E)	TRANSISTOR	
W386-389			R92-1252-05	CHIP R 0 OHM J 1/16W		Q220			2SC4467NF	TRANSISTOR	
W390,391			RK73EB2E000J	CHIP R 0.0 J 1/4W		Q222			2SA1694NF	TRANSISTOR	
W392			R92-1252-05	CHIP R 0 OHM J 1/16W		Q223,224			2SC4467NF	TRANSISTOR	
W393			RK73EB2E000J	CHIP R 0.0 J 1/4W		Q225,226			2SA1694NF	TRANSISTOR	
W501,502			R92-1252-05	CHIP R 0 OHM J 1/16W		Q227			2SC4467NF	TRANSISTOR	
D1			RM4ZLF-J1NF	DIODE		Q229			2SA1694NF	TRANSISTOR	
D3,4			02DZ16F-Y	ZENER DIODE		Q241,242			2SC4081	TRANSISTOR	
D5			FCH10A20	DIODE		Q251			2SC2235-F	TRANSISTOR	
D6			FRH10A20	DIODE		Q252			2SA965-F	TRANSISTOR	
D7-9			1SS133	DIODE		Q253			2SC2235-F	TRANSISTOR	
D10			LM1MA142WK-G	DIODE		Q254,255			2SA965-F	TRANSISTOR	
D101			LM1MA142WK-G	DIODE		Q256			2SC2235-F	TRANSISTOR	
D102			LM1MA142WA-G	DIODE		Q257			2SA965-F	TRANSISTOR	
D103			UMZ6.8N	ZENER DIODE		Q258			2SC2235-F	TRANSISTOR	
D104,105			LM1MA142WK-G	DIODE		Q280			2SC4081	TRANSISTOR	
D106,107			LM1MA142WA-G	DIODE		Q282			2SC4081	TRANSISTOR	
D152			1SS133	DIODE		Q601			2SC1845-A(F,E)	TRANSISTOR	
D203-206			1SS133	DIODE		Q602			2SC4081	TRANSISTOR	
D229			LM1MA142WA-G	DIODE		Q603			2SA1576A	TRANSISTOR	
D251			1SS133	DIODE		Q604			2SB1241	TRANSISTOR	
D253			LM1MA142WK-G	DIODE		Q605,606			2SC4081	TRANSISTOR	
D254			LM1MA142WA-G	DIODE		Q607,608			2SA992-A(F,E)	TRANSISTOR	
D255			LM1MA142WK-G	DIODE		Q609			2SD1863	TRANSISTOR	
D260,261			1SS133	DIODE		Q610-613			2SC945AA(Q,P)	TRANSISTOR	
D295			LM1MA142WA-G	DIODE		Q614,615			2SA1576A	TRANSISTOR	
D601-603			1SS133	DIODE		Q616			2SC4081	TRANSISTOR	
D604			02DZ10F-Y	ZENER DIODE		Q617			2SA1576A	TRANSISTOR	
D605			1SS133	DIODE		Q618			2SC4081	TRANSISTOR	
D606			02DZ15F-Y	ZENER DIODE		Q619,620			DTC114EUA	DIGITAL TRANSISTOR	
D607			02DZ6.8F-Y	ZENER DIODE		Q621			DTA114EUA	DIGITAL TRANSISTOR	
D608			02DZ12F-Y	ZENER DIODE		Q622,623			DTC114EUA	DIGITAL TRANSISTOR	
D610-613			1SS133	DIODE		TH201,202			NT732ATTD103J	THERMISTOR	
						TH601,602			NT732ATTD103J	THERMISTOR	

E1 : KAC-7203 (Europe) K : KAC-7203 (North America) M1 : KAC-7203 (Other Areas)

△ Indicates safety critical components.

KAC-7203

PARTS LIST

AUDIO UNIT (X09-5830-12)

Ref. No.	Add	New	Parts No.	Description	Destination
TH605			NT732ATTD103J	THERMISTOR	

Ref. No.	Add	New	Parts No.	Description	Destination

E1 : KAC-7203 (Europe) K : KAC-7203 (North America) M1 : KAC-7203 (Other Areas)

△ Indicates safety critical components.

SPECIFICATIONS

CEA-2006

RMS Watts per channel @ 4Ω, 1% THD+N 170W x 2
 Signal to Noise Ratio (Reference: 1W into 4Ω) 92dB

Audio Section

Max Power Output 1000W
 Rated Power Output (+B=14.4V)
 Normal (4Ω) (20Hz~20kHz, 0.08% THD) 170W x 2
 Normal (4Ω) (DIN : 45324, +B=14.4V) 170W x 2
 Normal (2Ω) (1kHz, 0.8% THD) 250W x 2
 Bridged (4Ω) (1kHz, 0.8% THD) 500W x 1
 Sensitivity (rated output)
 MAX 0.2V
 MIN 5.0V
 Input Impedance 10kΩ
 Frequency Response (+0, -3dB) 5Hz~50kHz

Signal to Noise Ratio 100dB
 Low Pass Filter Frequency (-24dB/oct.) ... 50~200Hz (variable)
 High Pass Filter Frequency (-12dB/oct.) .. 50~200Hz (variable)
 Bass Boost Circuit 0~+18dB (variable)
 Bass Boost Frequency 40Hz

General

Operating Voltage 14.4V (11~16V allowable)
 Current Consumption 40A
 Installation Size (W x H x D)
 380 x 64 x 286mm (14-15/16 x 2-1/2 x 11-1/4 inch)
 Weight 4.1kg (9.0 lbs)

KENWOOD follows a policy of continuous advancements in development. For this reason specifications may be changed without notice.

INSTALLATION

